



About Us

Founded in 1959, our multi-generational, family owned and operated business has grown into the largest industrial bakeware producer in the world. After servicing the commercial baking industry for over five decades, we endeavored to make bakeware for the home with the same high-quality, heavy duty features that our professional customers trust. With that vision in mind, the USA Pan bakeware brand was introduced in 2009. Proudly made in the USA, we are committed to producing bakeware that exceeds industry standards for innovation, quality and durability.



Commercial Quality

USA Pan Bakeware is truly commercial. Heavy duty and durable, our pans are designed to meet the needs of home bakers as well as the expectations and demands of a commercial bakery.

Aluminized Steel

The material of choice for commercial bakeries, our bakeware is made of heavy gauge aluminized steel that allows for even heat distribution and maximum service life. Many of our pans feature steel wires in the rim construction to provide additional strength.

Textured Design

Our bakeware's distinct fluted surface was designed to maximize strength, resist warping and increase durability. The fluted surface also facilitates air circulation which translates to a more evenly baked product that releases easily.



Nonstick Coating

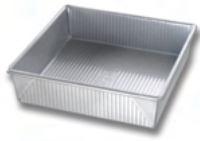
Americoat Plus II, our proprietary silicone release coating, is specifically formulated for superior release, easy clean up and is not made with PTFE, PFOA, or BPA. Glassy in appearance and slippery to the touch, Americoat Plus II is the most advanced industrial coating available and is used on almost every commercial pan in North America.

Cake Pans



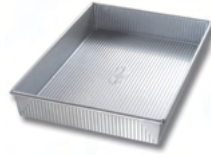
Round Cake Pan

- 5400LC - 4" x 2"
- 5600LC - 6" x 2"
- 1060LC - 8" x 2"
- 1070LC - 9" x 2"
- 1080LC - 10" x 2"
- 5120LC - 12" x 2"



Square Cake Pan

- 1120BW - 8" x 8" x 2¼"
- 1130BW - 9" x 9" x 2¼"



Rectangular Cake Pan

- 1110RC - 9" x 13" x 2¼"



Mini Round Cake Pan

- 1240HM - 6 WELL



Mini Cheesecake Pan

- 1285CC - 6 WELL



Leakproof Springform Pan

- 1086SF - 9" x 2⅝"



Fluted Tube Cake Pan

- 1087FT - 10" x 3¼"

Muffin / Cupcake Pans



Muffin Pan

- 1200MF - 12 CUP



Crown Muffin Pan

- 1210MF - 12 CUP



Mini Muffin Pan

- 1222MF - 24 CUP



Texas Muffin Pan

- 1265TM - 6 CUP



Mini Fluted Cupcake Pan

- 1280FC - 12 CUP



Muffin Pan

- 1295MF - 6 CUP

Loaf Pans



Loaf Pan

- 1140LF - 8½" x 4½" x 2¾"
- 1145LF - 9" x 5" x 2¾"
- 1150LF - 10" x 5" x 3"



Cocktail Loaf Pan

- 1142LF - 13¾" x 2¾" x 2¾"



Biscotti Pan

- 1143LF - 12" x 5½" x 2"



Mini Loaf Pan
Set of 4

- 1153LF - 5½" x 3⅞" x 2¼" ea.



Strapped Mini Loaf Pan - Set of 4

- 1155LF - 5½" x 3⅞" x 2¼" ea.



Meatloaf Pan
with Insert

- 1157LF - 10" x 5" x 3"



Pullman Loaf Pan & Cover

- 1160PM - 13" x 4" x 4"
- 1170PM - 9" x 4" x 4"



Mini Loaf Pan

- 1225MF - 8 WELL



Italian
Loaf Pan

- 1151IT - 16" x 8"
- 2 LOAVES



French
Baguette Pan

- 1152FR - 16" x 9"
- 3 LOAVES

Specialty Pans



Lasagna /
Bake & Roast Pan

- 1111RC - 13¾" x 10⅝" x 3"



Roaster Pan

- 1116RC - 9¾" x 10½" x 3⅝"



New England
Hot Dog Bun Pan

- 1190NE - 15" x 6" x 1½"



Brownie Bite Pan

- 1250MF - 20 WELL



Brownie
Bowl Pan

- 1251MF - 6 WELL



Mini Fluted
Tart Pan

- 1255FT - 6 WELL



Donut Pan

- 1260DN - 6 WELL



Popover Pan

- 1290PO - 6 WELL



Madeleine Pan

- 1297MD - 16 WELL

Dimensions represent baking surface, not overall pan size.

Pizza / Pie Pans



Pizza Pan

- 1090PZ - 12"



Pizza Pan

- 1097PZ - 14"



Pizza Pan

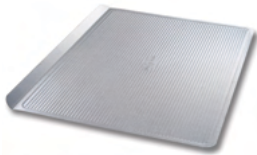
- 1096PZ - 16"



Pie Pan

- 1100PE - 9" x 1½"

Sheet Pans / Baking Racks / Baking Mats



Cookie Sheet Pan

- 1030LC - 17" x 12¼"



Cookie Tray Pan

- 10105SC - 12½" x 7¾"
- 10205MC - 12½" x 11¾"
- 10305LC - 16½" x 11¾"



Heavy Duty Sheet Pan

- 1051HS - 17¼" x 12¼" x 1"



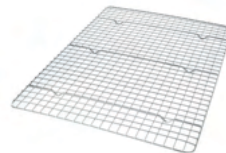
Half Sheet Baking Mat

- 1702MT - 16¼" x 11⅜"



Sheet Pan

- 1040JR - JELLY ROLL - 14¼" x 9⅜" x 1"
- 1043MS - MINI SHEET - 6" x 9" x 1"
- 1045QS - QUARTER SHEET - 12½" x 9" x 1"
- 1050HS - HALF SHEET - 17¼" x 12¼" x 1"
- 1055HS - EXTRA LARGE SHEET - 20¼" x 14¼" x 1"



Baking Rack

- 1600CR - QUARTER SHEET - 12" x 8¼" x ½"
- 1601CR - JELLY ROLL - 13¾" x 8⅝" x ½"
- 1602CR - HALF SHEET - 16¾" x 11½" x ½"
- 1603CR - EXTRA LARGE SHEET - 19¾" x 13⅝" x ½"

Seamless Pans



Seamless Rectangular Cake Pan

- 1117RC - 9" x 13" x 2"



Seamless Square Cake Pan

- 1121BW - 8" x 8" x 2"



Seamless Loaf Pan

- 1146LF - 8½" x 4½" x 2¼"

Sets



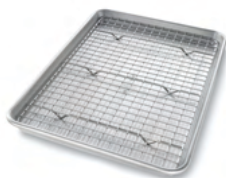
Three Piece Round Cake Pan Set

- 1042LC-ST – 4", 6", 8" dia., x 2"
- 1052LC-ST – 6", 8", 10" dia., x 2"



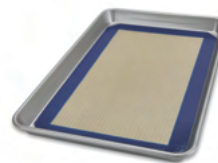
Five Piece Round Cake Pan Set

- 1095LC-ST – 4", 6", 8", 10", 12" dia., x 2"



Baking Pan & Rack Set

- 1604CR – QUARTER SHEET – PAN: 12½" x 9" x 1"
– RACK: 12" x 8¼" x ½"
- 1605CR – JELLY ROLL – PAN: 14¼" x 9¾" x 1"
– RACK: 13¾" x 8⅝" x ½"
- 1606CR – HALF SHEET – PAN: 17¼" x 12¼" x 1"
– RACK: 16¾" x 11½" x ½"
- 1607CR – EXTRA LARGE SHEET – PAN: 20¼" x 14¼" x 1"
– RACK: 19¾" x 13⅝" x ½"



Baking Pan & Mat Set

- 1704MT – QUARTER SHEET – PAN: 12½" x 9" x 1"
– MAT: 11⅝" x 8"
- 1705MT – JELLY ROLL – PAN: 14¼" x 9¾" x 1"
– MAT: 13¼" x 8⅝"
- 1706MT – HALF SHEET – PAN: 17¼" x 12¼" x 1"
– MAT: 16¼" x 11⅝"

Sets



Three Piece Set

1310ST

- COOKIE SHEET PAN – 17" x 12¼"
- QUARTER SHEET PAN – 12½" x 9" x 1"
- HALF SHEET PAN – 17¼" x 12¼" x 1"



Five Piece Set

1360ST

- COOKIE SHEET PAN – 13" x 12¼"
- HALF SHEET PAN – 17¼" x 12¼" x 1"
- ROUND CAKE PAN – 9" x 2"
- SQUARE CAKE PAN – 8" x 8" x 2¼"
- LOAF PAN – 8½" x 4½" x 2¾"



Six Piece Set

1320ST

- COOKIE SHEET PAN – 17" x 12¼"
- HALF SHEET PAN – 17¼" x 12¼" x 1"
- RECTANGULAR CAKE PAN – 9" x 13" x 2¼"
- SQUARE CAKE PAN – 8" x 8" x 2¼"
- LOAF PAN – 8½" x 4½" x 2¾"
- MUFFIN PAN – 12 CUP



Baking Pan & Lid Set

- 1040JRLD-ST – JELLY ROLL
PAN: 14¼" x 9¾" x 1" – LID: 14¹⁵/₁₆" x 10" x 2³/₈"
- 1050HSLD-ST – HALF SHEET
PAN: 17¼" x 12¼" x 1" – LID: 17⁵/₁₆" x 13" x 2¹/₈"
- 1117RCLD-ST – SEAMLESS RECTANGULAR CAKE PAN
PAN: 9" x 13" x 2" LID: 9¹¹/₁₆" x 13³/₁₆" x 2¼"
- 1111RCLD-ST – LASAGNA / BAKE & ROAST PAN
PAN: 13¾" x 10¾" x 3" LID: 16³/₁₆" x 11¹/₁₆" x 1⁵/₈"
- 1130BWLD-ST – SQUARE CAKE PAN
PAN: 9" x 9" x 2¼" LID: 9¹³/₁₆" x 9¹/₁₆" x 2³/₁₆"
- 1200MFLD-ST – MUFFIN / CUPCAKE PAN
PAN: 15¾" x 11¹/₈" x 1³/₈" LID: 15⁷/₈" x 11⁵/₁₆" x 2¹/₈"
- 1200MF-LID – MUFFIN / CUPCAKE LID ONLY
LID: 15⁷/₈" x 11⁵/₁₆" x 2¹/₈"

American Bakeware Classics®

A classic bakeware collection at an economical price point



Half Sheet Pan

• 1050HS-3-ABC - 17¼" x 12¼" x 1"



Round Cake Pan

• 1070LC-3-ABC - 9" x 2"



Rectangular Cake Pan

• 1110RC-3-ABC - 9" x 13" x 2"



Square Cake Pan

• 1120BW-3-ABC - 8" x 8" x 2"



Loaf Pan

• 1140LF-3-ABC - 8½" x 4½" x 2¾"



Half Sheet Pan
& Baking Rack

• 1606CR-3-ABC - PAN: 17¼" x 12¼" x 1"
- RACK: 16¾" x 11½" x ½"

Features:

- Nonstick coating - made without PTFE, PFOA or BPA
- Fluted surface for even baking, easy release and pan strength
- Heavy duty aluminized steel
- Easy grip handles
- Made in the USA



Find us here:
www.usapan.com







33 McGovern Boulevard
Crescent, Pennsylvania 15046
Tel: 724.457.4220 / Fax: 724.623.0001
Email: info@usapan.com
www.usapan.com

Refer to the USA Pan Price List for additional product
ordering information.

USA Pan is a trade name for Premier Pan Company, Inc.